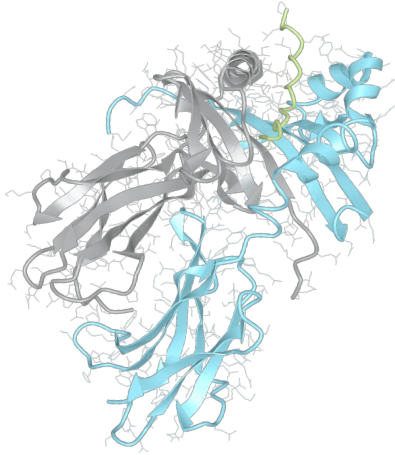


Product datasheet



sHLA– DPB1*13:01bio DPA1*01:03bio

DPB1*1301, DPB11301, DPB1*13, DPB13
DPA1*0103, DPA10103, DPA1*01, DPA01

Serological Name	-
Peptide Load	Endogenous
Modification	Unmodified
Conjugation	Biotin
SKU	DPB11301/DPA10103bio

Product Description

Allele Name	DPA1*01:03 DPB1*13:01
HLA Class	HLA Class II
HLA Gene Locus	HLA-DP
Alternative Allele Name A Chain	DPA1*0103, DPA10103, DPA1*01, DPA01
Alternative Allele Name B Chain	DPB1*1301, DPB11301, DPB1*13, DPB13
Description	Recombinant, truncated Class II soluble Human Leukocyte Antigen (sHLA), naturally folded and glycosylated, loaded with endogenous peptides.
Serological Name	-
Serological Split	-
Allele Frequency [World Population]	
A chain	53.1%
B chain	5.2%

Associated products

[DPB11301/DPA10103](#)
[DPB11301/DPA10103pe](#)

Product Specification

Product name	HLA-DPB1*13:01/DPA1*01:03bio
HLA Species	Human
Host Cell Line Species	Mouse
Clone Designation	H12G9
Tail Specification	ZP
Peptide Load	Endogenous
Modification	Unmodified
Conjugation	Biotin
Complexity	Monomer
Protein Format	Recombinant, truncated, zipper-stabilized, soluble, non-modified, biotinylated, endogenously loaded
Storage Temperature	4°C (This product should be stored undiluted)
Form	Liquid
Concentration	300.0 µg/µl
Formulation	PBS/0.02% Sodium Azide
pH	7.4
Purification Method	Affinity Chromatography
Grade	Research Use Only [RUO]
Authentication Verification	Sequence Based Typing

Protein Sequences

Alpha Chain Sequence	IKADHVSTYA AFVQTHRPTG EFMFEFDEDE MFYVDLDKKE TVWHLEEFQ AFSFEAQGGL ANIAILNNL NTLIQRSNHT QATNDPPEVT VFPKEPVELG QPNTLICHID KFFPPVLNVT WLCNGELVTE GVAESLFLPR TDYSFHKFHY LTFVPSAEDF YDCRVEHWGL DQPLLKHWEA QEPIQMPETT EVDGGGGGAQ LEKELQALEK ENAQLEWELQ ALEKELAQ
Beta Chain Sequence	RATPENYVYQ LRQECYAFNG TQRFLERYIY NREEYARFDS DVGEFRAVTE LGRPAAEYWN SQKDILEEER AVPDRICRHN YELDEAVTLQ RRVQPKVNVS PSKKGPLQHH NLLVCHVTDF YPGSIQVRWF LNGQEETAGV VSTNLIRNGD WTFQILVMLE MTPQQGDVYI CQVEHTSLDS PVTVEWKAQS DSARSKVDGG GGGAQLKKKL QALKKKNAQL KWKLQALKKK LAQ

Related Products

[DPB10501/DPA10202bio](#)
[DPB10401/DPA10201bio](#)
[DPB10402/DPA10103bio](#)
[DPB10201/DPA10103bio](#)

Applications

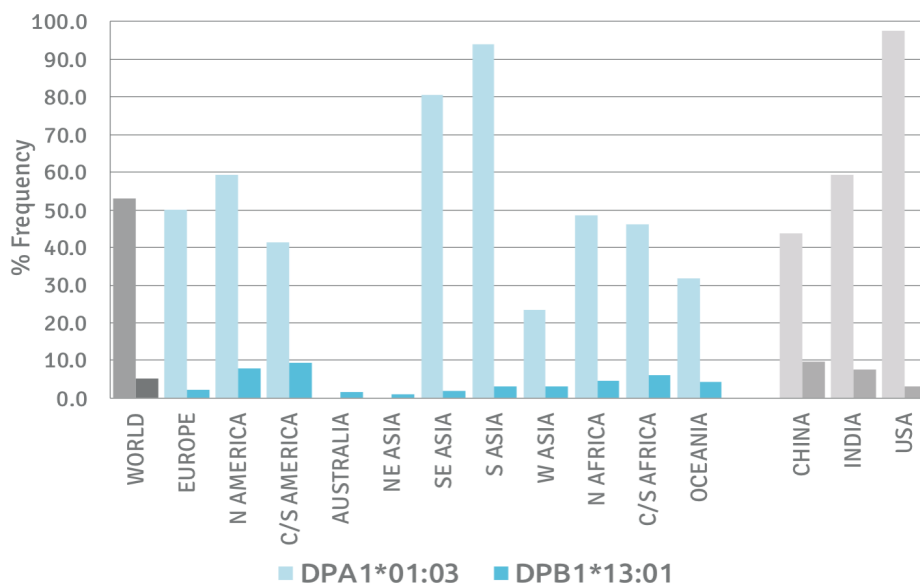
HLA Sandwich ELISAs
 HLA Direct ELISAs
 HLA-Sera Antibody Assays
 HLA Controls in ELISA Assays
 HLA Assay Standards
 HLA Blocking Assays
 HLA Neutralizing Assays
 HLA Competition Assays
 HLA Bead Assays
 HLA Immunization Procedures

Recommended Antibodies

-

Allele Frequency

Worldwide Allele Frequency



Please note:

ALL PRODUCTS ARE FOR RESEARCH USE ONLY. NOT FOR COMMERCIAL USE IN DIAGNOSTIC PROCEDURES.
 For more information, please visit our Policies section on our website. For licensing inquiries, please contact

licensing@hlaprotein.com

HLA Protein
 PURE PROTEIN LLC

Eplet Assignments

DPB1*13:01

Eplet	Polymorphic Residues	Antibody Reactivity
8V	8V	
9Y	8V9Y	
9YL	8V9Y11L	
11L	8V11L	
33E	33E	
33EA	33E36A	
33EYA	33E35Y36A	
35VA	35Y36A	
36A	36A	
55A	55A	
56A	56A	Yes
57E	57E	
65I	65I	
65IE	65I69E	
69E	69E	Yes
76I	76I	
84DEAV	84D85E86A87V	Yes
96K	96K 170I	Yes
178L	178L	

Eplet Assignments

DPA1*01:03

Eplet	Polymorphic Residues	Antibody Reactivity
11A	11A	
28E	28E	
31M	31M	
50Q	50Q	Yes
127L	127L 160F	
160F	160F	
190T	190T	

